

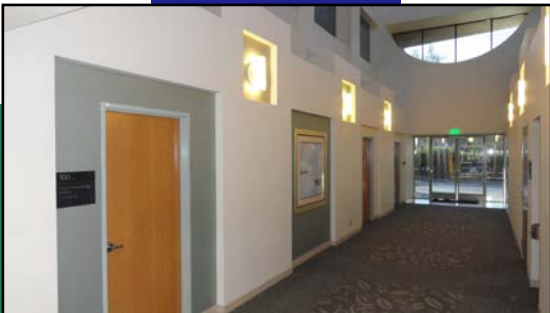
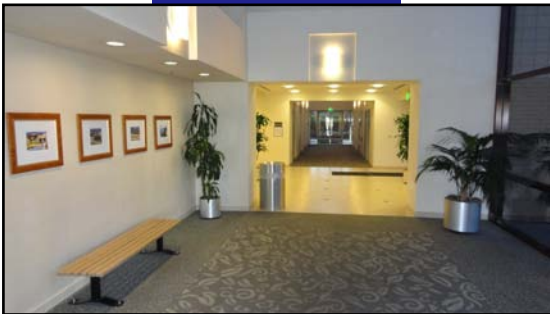
Medical Suites for Lease



Barranca Medical Plaza 62 Corporate Park - Irvine, California

Property Features:

- 30,000 Square Foot Multi-Tenant Medical Office Building
- **Suite 200** – 1,630 SF – Available January 1, 2012 (Now Leasing)
 - Suite was Custom Designed and Built by an Orthodontist
 - \$3.55 per RSF – FSG (No CAM Charges)
- **Suite 240** – 2,429 SF – Available January 1, 2012 (Now Leasing)
 - Suite was Previously Occupied by a Dermatologist
 - \$3.55 per RSF – FSG (No CAM Charges)
- Class 'A' Medical Building
- Free Surface Parking
- Great Medical and Dental Tenant Mix
- Professionally Managed Building
- Elevator Served



Bryan McKenney

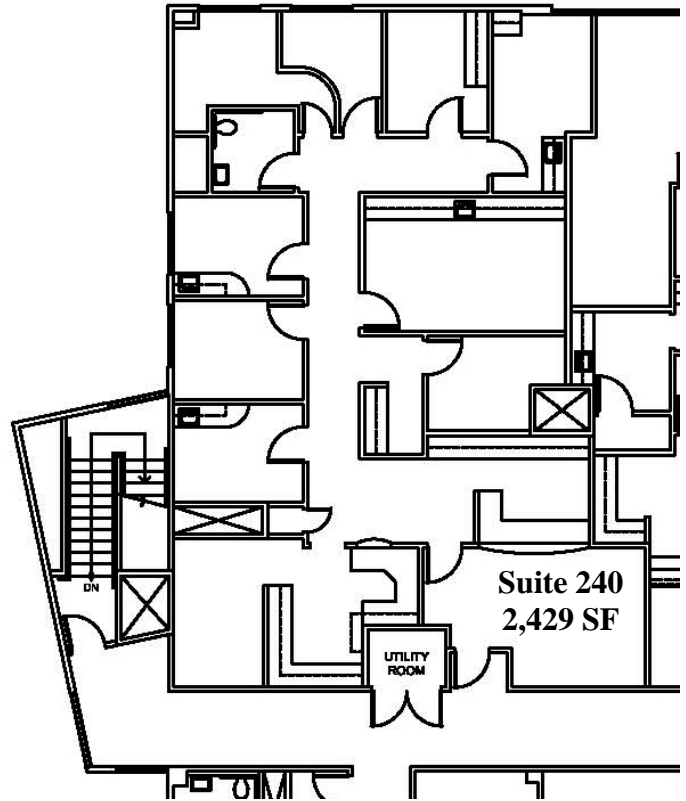
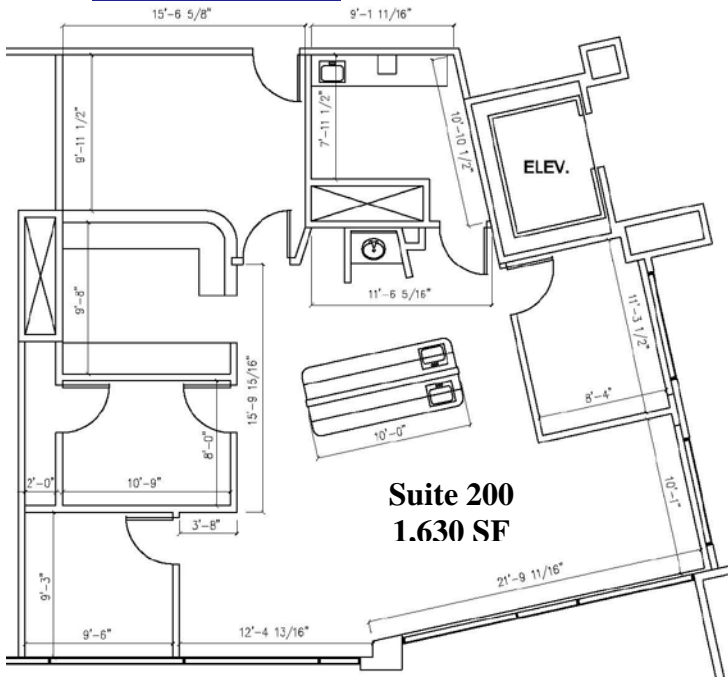
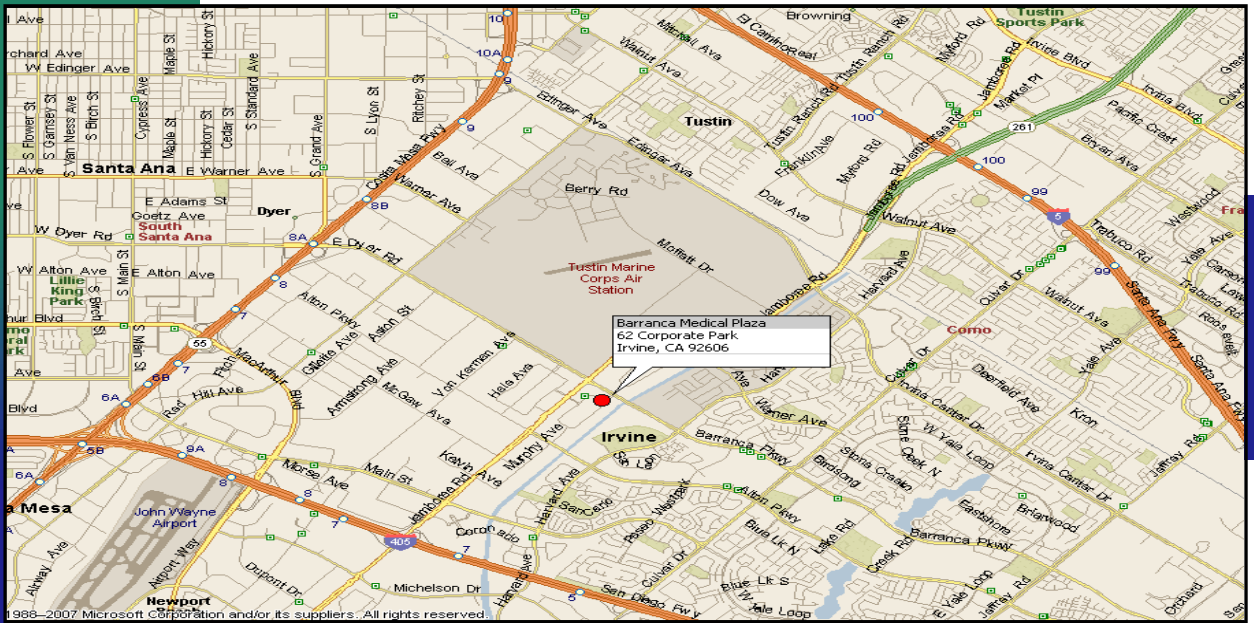
949.794.9544

Bryan@hwra.org

HealthWest Realty Advisors
1800 Quail Street, Ste 100
Newport Beach, CA 92660
www.healthwestrealty.com



The information contained herein has been gathered from sources deemed reliable.
Though we have no reason to doubt the accuracy, we do not guarantee it.
Bryan McKenney – DRE#01505792



Bryan McKenney
949.794.9544
Bryan@hwra.org

HealthWest Realty Advisors
1800 Quail Street, Ste 100
Newport Beach, CA 92660
www.healthwestrealty.com

