

Medical Condo for Lease 1,712 Square Feet

**Rents
Starting as
Low as
\$1.50 PSF**



The Providence Building 1310 West Stewart Drive – Suite 307 Orange, California

Property Features:

- 1,712± Square Foot Suite – Now Available
- On-Campus of CHOC and St. Joseph Hospital
- Elevator Served Building
- Corner Unit with Immediate Stair Access
- Close proximity to the 5, 22, and 57 Freeways
- Highly Sought After Location
- Up to \$50/SF for Tenant Improvements

Estimated 25% Return on Investment by Buying versus Leasing

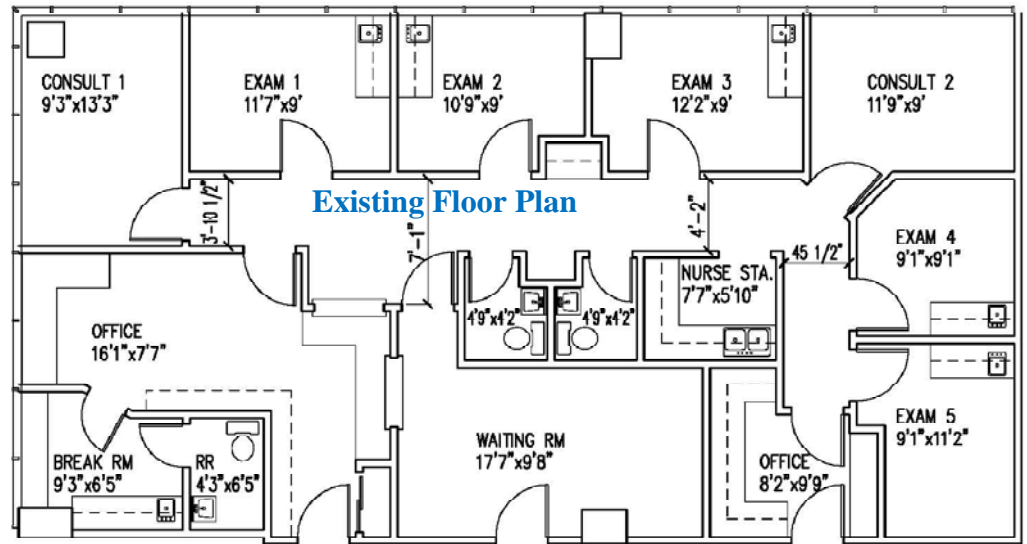
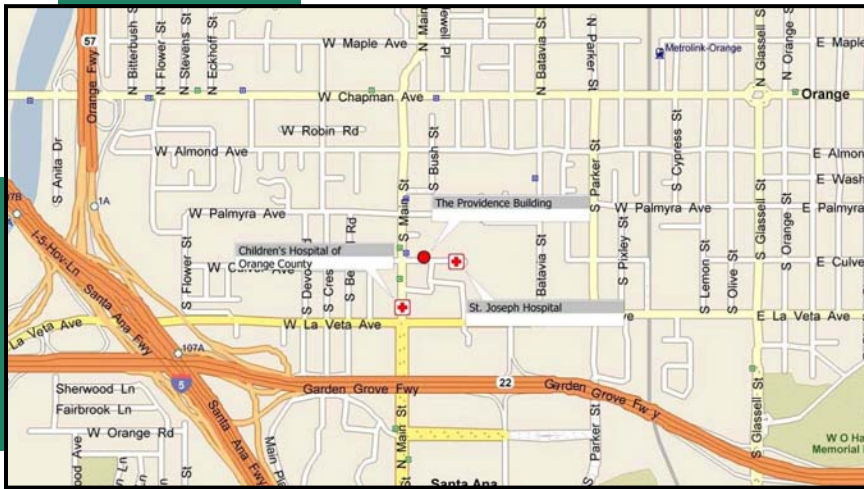


Bryan McKenney
949.794.9544
bryan@hwra.org

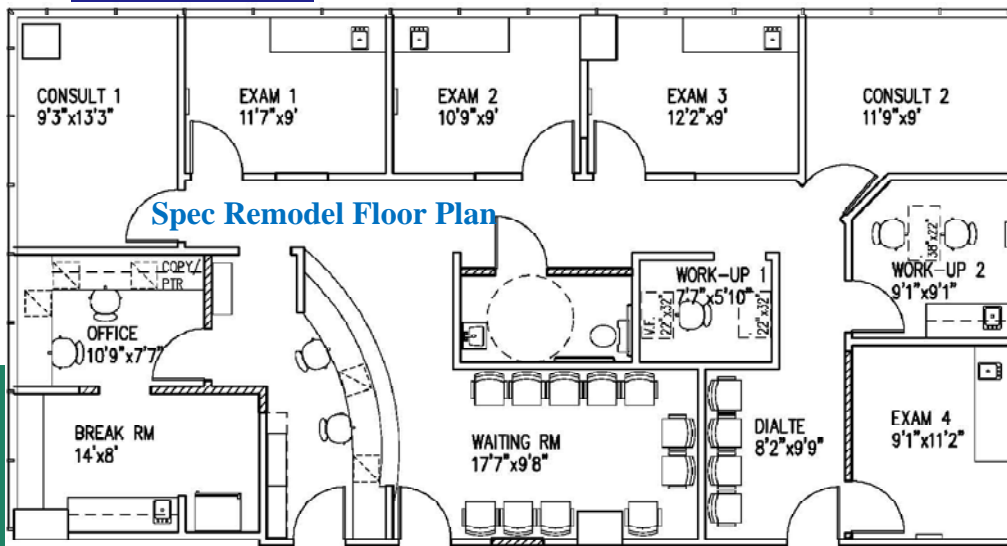
HealthWest Realty Advisors
1800 Quail Street, Ste 100
Newport Beach, CA 92660
www.healthwestrealty.com



The information contained herein has been gathered from sources deemed reliable. Though we have no reason to doubt the accuracy, we do not guarantee it.
Kevin Leonard – DRE#00867855



Existing Floor Plan



Spec Remodel Floor Plan

HealthWest Realty Advisors
 1800 Quail Street, Ste 100
 Newport Beach, CA 92660
www.healthwestrealty.com

The information contained herein has been gathered from sources deemed reliable. Though we have no reason to doubt the accuracy, we do not guarantee it.
 Kevin Leonard - DRE#00867855



REALTY ADVISORS